

FINISHING TOUCH®

FLAWLESS®



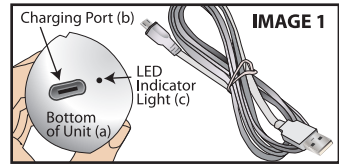
Rechargeable Facial Hair Remover

NOTE:
Must fully charge unit
prior to
first use!

Thank you for your purchase of FLAWLESS®, the easy and convenient facial hair remover.

Getting Started / Charging Battery

- Prior to first use, fully charge unit (approximately 8 hours to full charge).
- Insert micro USB end of the charging cable into the **charging port (b)** located at the **bottom of the unit (a)** (Image 1).
- The charging **LED Indicator Light (c)** will turn RED while unit is charging.
- When charging is complete, the **LED Indicator Light (c)** will turn OFF.



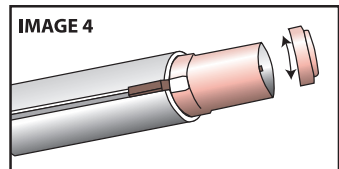
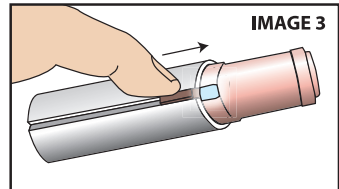
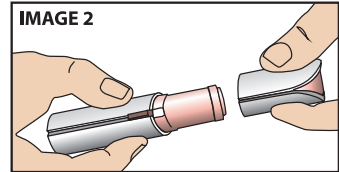
How to Use

- Remove the FLAWLESS® cap (Image 2).
- Slide the switch located on the side of the unit upward into the "ON" position (Image 3). The light will automatically turn on when the unit is "ON".
- Gently press the head of the unit flat against your skin. The unit should not be on an angle. Proceed making small circular motions to remove unwanted hair (Image 5).

NOTE: It is normal for the head to become warm with use.

Cleaning (Be sure unit is off)

- Twist the rotating head counter-clockwise and lift off (Image 4).
- **After each use, clean the head by using a brush (included) to wipe away the hair residue.**
- Empty any hair from the body of the FLAWLESS® unit by turning it over and gently tapping the sides.
- To put the head back on the unit, line up the "groove" indicators on the cap with those on the unit and twist clockwise (Image 4).



Tips & Pointers

- **If the unit begins to slow down, clear the head and body of any hair residue. If the unit is still running slow, charge the battery.**
- Gentle enough to use every day.
- For airbrush-like make-up application, use daily.

NOTE: Prior to first use, test the FLAWLESS® on a small area. If any sensitivity or allergic reactions occur, discontinue use immediately. Do not use your Flawless on sensitive or irritated skin.

Replacement Head

For optimal results it is recommended that you replace your Flawless head every 3-4 months, or when it no longer provides the desired results. The head may need to be replaced sooner if the Flawless loses performance or if the head becomes chipped or damaged in any way. Ensure Flawless is fully charged prior to evaluating performance.

Go to www.clikit.ca for special replacement head offer.



Warning

- Keep out of reach of children.
- Do not use on irritated skin. Discontinue use if skin irritation occurs.
- Exercise caution when using around eyes.
- Do not rinse head under water.
- Do not submerge unit under water.
- Store in a cool dry place when not in use.
- This unit contains a Nickel-Metal Hydride battery. Dispose of in accordance with all applicable federal, provincial and local regulations.
- Do not dispose in fire.

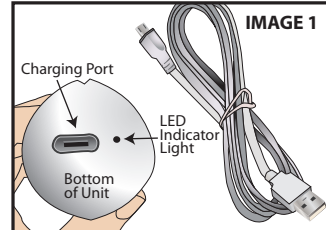
FINISHING TOUCH®

FLAWLESS®

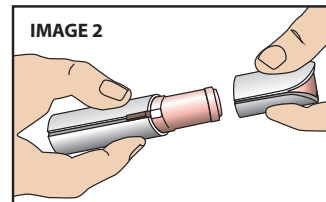
Rechargeable Facial Hair Remover

QUICK START GUIDE

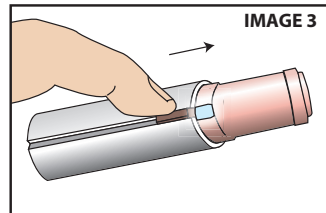
- 1. Charge unit (8 hours to full charge).** (Image 1)



- 2. Remove cap.** (Image 2)



- 3. Turn Unit On: Just slide gold switch upward.** (Image 3)



- 4. To Remove Hair: Use in a circular motion.** (Image 4)



U.S. & International Trademarks
& Patents Pending

This AC wire carrier current device of unintentional radiator is a Category II equipment compliant with Industry Canada's ICES-006.

LIMITATION OF LIABILITY

Liability limited to the purchase price of this product. Supertek Canada Inc. shall not be liable for any incidental or consequential damages or any implied warranty on this product.

Distributed by: Supertek Canada Inc.
Mont-Royal, QC H4T 1X2
www.diiikit.ca
Customer Service : 1-800-304-8354