

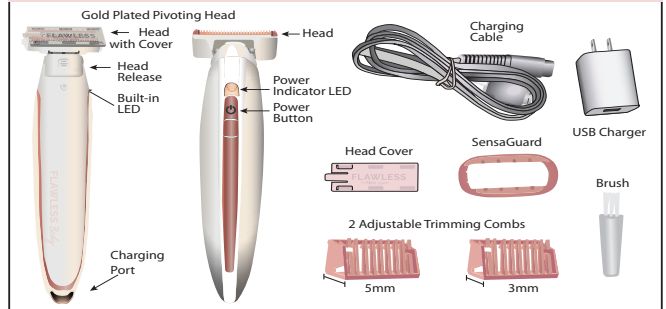
FINISHING TOUCH®
FLAWLESS Body™
 THE TOTAL BODY HAIR REMOVER



To register your Flawless Body and to receive special offers, go to www.clickit.ca

DRY USE ONLY
 (See cleaning instructions inside)

Your Flawless Body Kit



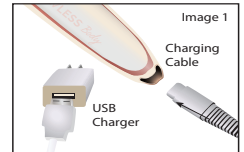
IMPORTANT: DO NOT USE OR SUBMERGE IN WATER OR ANY LIQUIDS.

Getting Started

Prior to first use, test on a small, discreet area. If sensitivity or allergic reactions occur, discontinue use immediately. As with all trimmers/shavers, use caution around sensitive areas.

CHARGING / RECHARGING

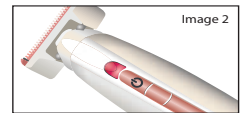
- Make sure the unit is fully charged before use.
- Plug the small end of the Charging Cable into the Flawless Body and large plug into a USB charger (Image 1). Initial charging or recharging requires approximately 4 hours.
- The Power Indicator LED will turn RED when charging. (Image 2) The light will turn off when fully charged.



NOTE: Do NOT operate unit while plugged in or charging.

OPERATING TIME

- Flawless BODY has a cordless operating time of up to 45 minutes when fully charged.
- If the unit begins to slow down, charge the battery.



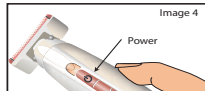
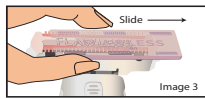
Using Flawless Body

FOR BEST RESULTS, use on clean, dry skin that is free of any creams, lotions, oils, deodorants or other topical residue.

PRIOR TO FIRST USE, test on a small, discreet area. If sensitivity or allergic reactions occur, discontinue use immediately. As with all trimmers/shavers, use caution around sensitive areas.

- If head cover is on, slide cover off prior to use (Image 3). Press power button to turn Flawless Body ON and OFF (Image 4). When the power is ON the Power indicator LED will turn ON.

Flawless Body is designed to remove or groom hair. The **pivoting, bi-directional head lets you shave up and down** on any angle for instant and painless hair removal. The **built-in LED light** ensures you never miss a hair.



CHOOSING THE RIGHT ATTACHMENT

GOLD-PLATED HEAD (WITHOUT A GUARD OR COMB)

- For closer hair removal, use without SensaGuard or any attachments. (Image 5)

WITH SENSAGUARD

- Ideal for sensitive areas such as under arms and bikini area. Provides a close shave. (Image 6)

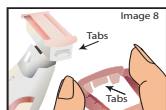
WITH COMB ATTACHMENT

- Ideal for trimming or shaving. Provides a 3mm or 5mm trim. (Image 7)

Attachments

TO REMOVE AND REPLACE SENSAGUARD

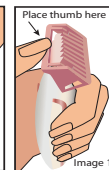
- Align the tabs on the SensaGuard to the tabs on the head of the Flawless Body (Image 8).
- Press onto the head until you hear it click into place (Image 9).
- To remove, place your thumb on the center of the head while lifting the corner of the SensaGuard and releasing it from the head (Image 10).



Attachments (continued)

TO REMOVE AND REPLACE TRIMMING COMB

- Select one of the Trimming Combs provided and place it on the head, ensuring both sides snap into place (Image 11). Teeth can face both directions.
- Place thumb on top of Trimming Comb (Image 12) and push down to flip comb off head (Image 13).
- Lift Trimming Comb off head.

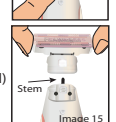


Care and Maintenance

For optimal results, replace the head every 1-3 months, depending on frequency of use or when it no longer provides the desired results.

TO REPLACE HEAD

- Remove any attachments.
 - With cover on, gently, press the head release button and pull up while holding the head to prevent falling (Image 14-15).
 - Hold the new head by its sides and press onto the neck of unit. There will be a "click" when the head is secure.
- NOTE:** Be sure the stem (Image 15) found on the neck of the unit (under the head) is centered prior to securing to unit. After replacing, if head does not move once turned on, remove the head, turn unit on briefly, turn off, then reinstall head.



CLEANING AND STORAGE

- Do not rinse or submerge into water or other liquid.
- The Flawless Body head is fragile – please handle with care.
- Before storing or reusing, be sure to clean head with the brush provided making sure to remove all residual hairs.
- Store your unit, attachments, brush, charging cord and plug in a dry, safe place.

For additional Flawless items, accessories, how-to-videos and to register your product, please go to www.clickit.ca

Warning

- **DRY USE ONLY**
- **Do not rinse. Only use brush to clean head.**
- Keep out of the reach of children.
- Do not place or drop in water or other liquid while plugged in.
- Do not rinse or submerge into water or other liquid.
- Unplug and remove power cord before cleaning/using.
- This unit contains a Lithium Ion battery. Dispose of in accordance with all applicable federal, state and local regulations.
- Do not dispose of in fire.
- Do not use on broken or irritated skin.
- Always check the unit before use. Do not use if damaged, as personal injury may occur.

This AC wire carrier current device of unintentional radiator is a Category II equipment compliant with Industry Canada's ICES-006.

LIMITATION OF LIABILITY

Liability limited to the purchase price of this product. Supertek Canada Inc. shall not be liable for any incidental or consequential damages or any implied warranty on this product.

Distributed by:
 Supertek Canada Inc.
 Mont-Royal, QC H4T 1X2
www.clickit.ca
 Customer Service: 1-800-304-8354
 Made In China