

DERMALINE™

KIT INCLUDES:

Dermaline™ Facial Hair Remover
2 Dermaplaners & Caps
1 AA Battery
1 Head Cleaner Brush

INSTANT & PAINLESS HAIR REMOVER

1. INSTALL BATTERY

Remove cap from unit. (Illust.1).
Pull apart top and bottom of unit and insert included AA battery into battery compartment, following the +/- indicators. (Illust.2)

Slide top and bottom casings back together.

2. TURN UNIT ON

Slide switch upwards to turn unit on. (Illust.3)

3. HOW TO USE

NOTE: Before first use, it is recommended that you test the unit on a small area of your arm or leg. If sensitivity or allergic reactions occur, discontinue use.

Gentle enough to use every day. Use daily for perfect and smooth makeup application.

For best results, use on hair 0.6 cm. (1/4") long or less.

Use on clean, dry skin. Gently press unit head flat against your skin and make small circular motions to remove hair. (Illust.4) Do not hold unit on an angle.

NOTE: It is normal for the unit head to become warm with use.

If unit begins to slow down, use the included brush to clean hair residue from unit head and body.

If unit is still running slow, change the battery.

CLEANING

After Each Use: Clean unit head with included brush.

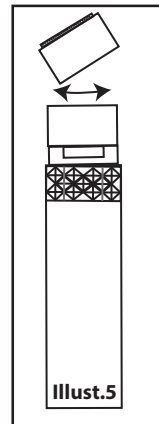
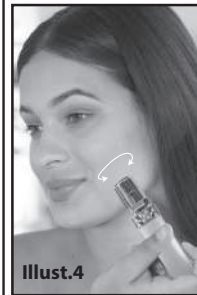
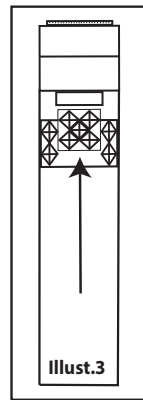
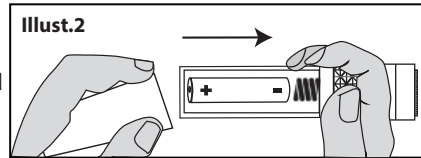
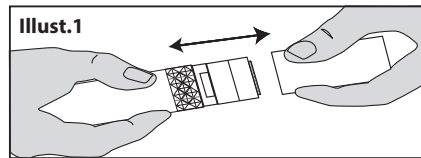
To empty hair from unit body, turn it over and gently tap the sides.

- To clean, turn unit off.
- Twist head counter-clockwise and lift off. (Illust. 5)
- Twist head clock-wise to lock back in place.

CAUTION:

- Not intended for persons under 12 years of age.
- Use only as intended as per this manual.
- Do not use on irritated skin, open wounds or on breakouts. If skin irritation occurs, discontinue use.
- Exercise caution when using around eyes.
- Do not submerge unit or rinse head in water.
- Do not put used batteries in fire as they could explode or leak. Dispose according to all local regulations.

WARNING: KEEP OUT OF REACH OF CHILDREN



FACIAL HAIR REMOVER KIT INSTRUCTIONS FOR USE

DERMAPLANERS

Exfoliator Blades

The Dermaline™ Dermaplaners are designed to remove hair and exfoliate the chin, forehead, cheeks and above the upper brow and upper lip areas.

The Dermaline™ Dermaplaner is to be used ONCE A WEEK ONLY, and should be used at night.

HOW TO USE

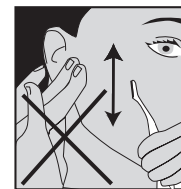
1. Thoroughly wash and dry your face before use. The Dermaline™ Dermaplaner is for use on dry, clean skin only.
2. Remove safety cap from Dermaplaner.
3. Hold skin taut and gently skim blade across skin using short, light strokes.
DO NOT press down on blade or apply any pressure. Do not pass over area more than once during treatment.
4. Gently wipe blade clean after treatment and replace cap. Use a clean Dermaplaner for each treatment.

AFTER USE

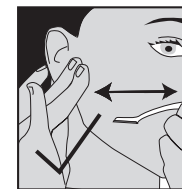
1. If skin is sensitive after use, wash with a gentle skin cleanser.
2. Do not apply lotion or makeup immediately after Dermaplaning. To avoid clogging pores, wait overnight before applying.

WARNING

- Do not use on any skin that is irritated, including dryness, acne, sunburn, psoriasis, eczema, diabetes, or if you have circulatory or bleeding disorders.
- Avoid lips, nose, ears and eyes.
- Do not use after having any recent facial procedure.
- Do not attempt to remove scars or tattoos with the Dermaplaner blades.
- **DO NOT slide along skin in the same direction as the blade or cuts could result.**



NO



YES

LIMITATION OF LIABILITY

Liability limited to the purchase price of this product.

Supertek Canada Inc. shall not be liable for any incidental or consequential damages or any implied warranty on this product.

Distributed by:
Supertek Canada Inc.
Mont-Royal, QC H4T 1X2
Customer Service: 1-800-304-8354

www.clikit.ca