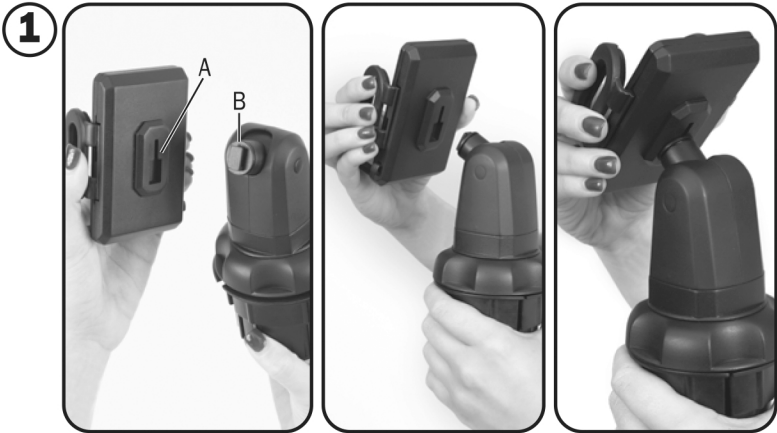


# Cup Call™

**IMPORTANT SAFETY INSTRUCTIONS. READ AND FOLLOW ALL WARNINGS AND INSTRUCTIONS BEFORE USING THIS PRODUCT. INJURY CAN RESULT FROM IMPROPER USE. SAVE THESE INSTRUCTIONS.**

**CAUTION: CUP HOLDER LOCATION MAY IMPEDE VISION OF PHONE IN SOME CARS.**

## Instructions for Use:



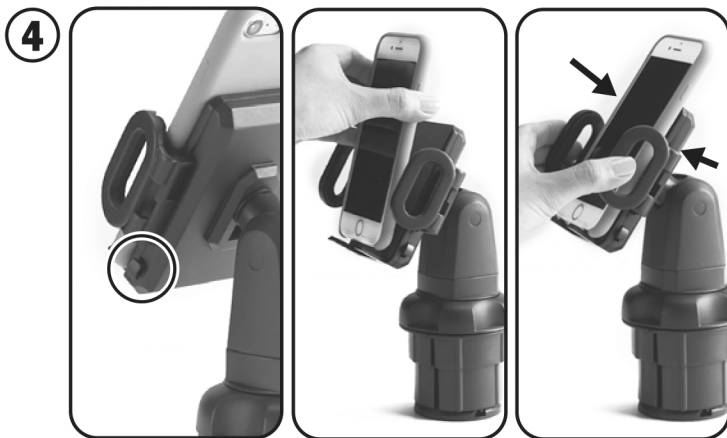
**Cup Call™ comes pre-assembled, but to attach cradle to base,** line up square slot (A) opening on back of cradle with the arm of the base (B). Make sure square slot (A) is facing down. Starting at narrow part of opening, slide cradle onto base and slide up.



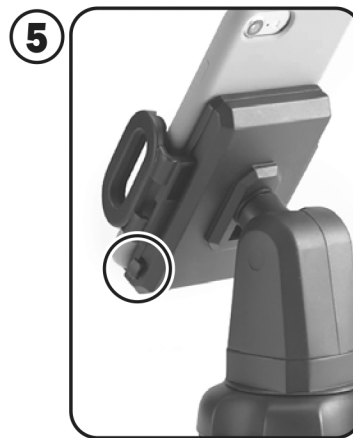
**To adjust size of base,** twist ring until base fits your car's cup holder.



**Place in cupholder,** ensuring base is expanded for a snug fit. Adjust as necessary.



**To attach phone to holder,** press release button to expand, place on cradle, and squeeze sides together to tighten. Tilt cradle for optimal viewing.



**To release phone from cradle,** press release button.

### **LIMITATION OF LIABILITY**

*Liability limited to the purchase price of this product. Supertek Canada Inc. shall not be liable for any incidental or consequential damages or any implied warranty on this product.*



Distributed by:  
Supertek Canada Inc.  
Mont-Royal, QC H4T 1X2

Customer Service: 1-800-304-8354